



The Better Way. Every Day. **swarco** 

# VM24211-STANDARD 'YOUR SPEED' VAS QUOTATION 2023 V4 Vehicle Activated Sign

## SCOPE OF WORKS

- ▶ SWARCO's range of LED traffic signs for safety applications, driver information and parking guidance are all designed in accordance with the latest Department for Transport specifications and are type approved to TR2516B.
- ▶ Signs offered are CE marked to EN12966 for any speed of road, and hold Highways England TOPAS approval for use on the highway.
- ▶ This quotation covers mains powered vehicle activated signs with any 240mm or 300mm 2-digit 'Your Speed' display, with the 'slow down' & 'thank you' message.
- ▶ Values quoted are for mains-powered YSI VAS with additional values for sign installation & commissioning.



# STANDARD VAS

**240mm 2-digit red/green display with slow down / thank you**  
**Enclosure: 650mm x 450mm**

Item number & description	Price exc. VAT
Item 1b – Supply Sign (red/green display)	£3,080.00
Item 2 – Install and Commission Sign	£550.00
<b>Additional options</b>	
Item 3 – Additional Cost for MVD Data logging (downloaded via controller wi-fi)	£120.00
<b>Total</b>	<b>£3,750.00</b>



Display 1  
Below speed limit



Display 2  
Within 10% above speed limit



Display 3  
Over 10% above speed limit, below upper limit



Display 4  
Above upper limit

## SIGN OPERATION.

### **Sign Operation (2-digit red/green display only)**

The sign is activated by approaching vehicles travelling above and below the set speed limit. The speed of approaching vehicles is displayed on the 2-character display in red for vehicles over speed and green for vehicles under speed.

Depending on the speed threshold set by the user, an upper speed limit can be set above which the speed is not displayed to deter bad driver behaviour if required.



# SIGN OPERATION.

## Sign Operation (amber display with 'slow down'/'thank you')

The sign is activated only by approaching vehicles travelling below and above the speed threshold. The display time and speed thresholds are set within the controller. When activated the sign will display one of 4 messages depending at what speed the sign was activated.

- If the approaching vehicle is travelling below the set speed limit the two-character amber display (speed of vehicle) and THANK YOU in green will be activated.
- If the approaching vehicle is travelling within 10% over the set speed limit the two-character amber display only will be activated and display the speed of the vehicle.
- If the vehicle is travelling over 10% above the set speed limit but below the upper speed threshold the two-character amber display will be activated along with SLOW DOWN in amber (and flashing ambers if selected).
- If the vehicle is travelling above the upper speed threshold SLOW DOWN in amber only (with flashing ambers if selected) is displayed. This is to deter vehicles from attempting to display speeds above the chosen upper threshold.



# SIGN OPERATION.

## Sign Operation (red/green display with 'slow down'/'thank you')

The sign is activated only by approaching vehicles travelling below and above the speed threshold. The display time and speed thresholds are set within the controller. When activated the sign will display one of 4 messages depending at what speed the sign was activated.

- If the approaching vehicle is travelling below the set speed limit the two-character green display (speed of vehicle) and THANK YOU in green will be activated.
- If the approaching vehicle is travelling within 10% above the set speed limit the two-character red display only will be activated and display the speed of the vehicle.
- If the vehicle is travelling over 10% above the set speed limit but below the upper speed threshold the two-character red display will be activated along with SLOW DOWN in amber (and flashing ambers if selected).
- If the vehicle is travelling above the upper speed threshold SLOW DOWN in amber only (with flashing ambers if selected) is displayed. This is to deter vehicles from attempting to display speeds above the chosen upper threshold.



# ENERGY SYSTEM

## Energy System (Mains)

The sign quoted is mains powered and is supplied pre-wired with 5m of 1.5mm 3 core mains cable fitted and coiled inside the sign body along with 0.5m of Adaptaflex sheathing and 1 no 20mm Adaptaflex gland assembly.

Responsibility for drilling of the case to suit the post installation remains with the client installer and STL will not be held responsible for consequential costs due to sign or sign component damage as a result of incorrect installation.



## DATA LOGGING

Data logging is offered as an optional addition to the sign specification. In optimal conditions the radar count accuracy for a single lane approach is +/-10% and +/-20% on a dual lane approach based on an operational range of 90m. The inbuilt memory has a capacity of 6 months which can be downloaded to a laptop via the inbuilt wi-fi connection.

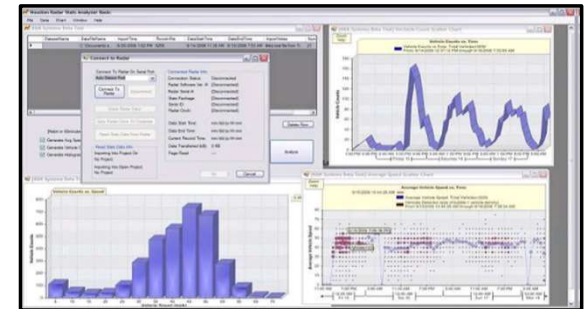
The Windows © data software supplied with the radar collects the traffic data and offers various options to manipulate the data including export to Microsoft Excel.

Our support website <https://www.swarco.com/companies/swarco-traffic-ltd> contains links to manuals and software for vehicle activated signs.

The software can be downloaded to a laptop/PC from the SWARCO website.

An app is also available from [The Google Play Store](#) that provides download and basic data analysis facilities on any Android device.

Please note: Data collected from a sign MVD may not be fully representative on vehicle counting, due to queueing or dense traffic occlusion. The data recorded is designed to provide representative traffic behaviour trends for analysis via the software graphical or numerical outputs.





**SWARCO UK & Ireland LTD.**

Western House Business Park

East Road

Melsonby

Richmond

DL10 5NF

T: +44(0)1748 824624

E: [office.stl@swarco.com](mailto:office.stl@swarco.com)

[www.swarco.com](http://www.swarco.com)